

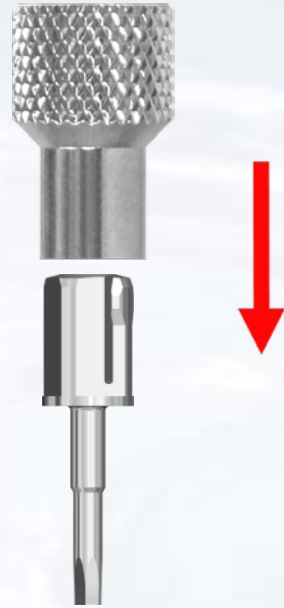
# BIO|MAX UCLA Screw Retained Crown



**Blue Sky Bio**

# BIO|MAX UCLA Screw Retained Crown

Assemble screw driver with  
Thumb Knob



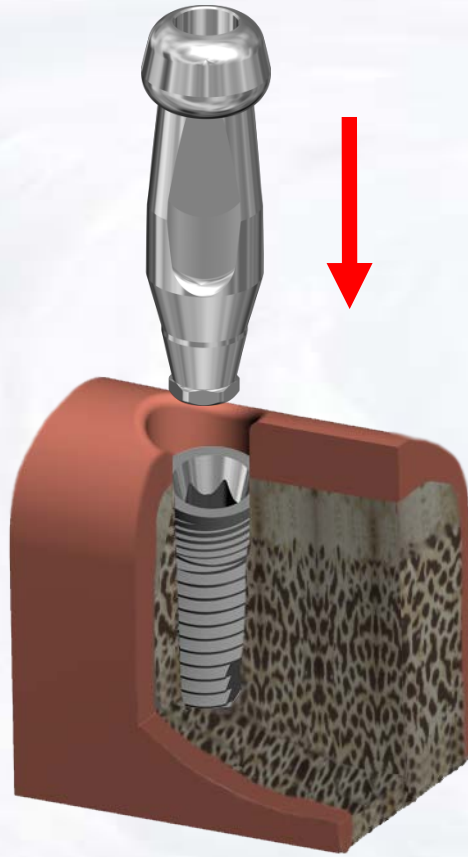
Remove healing abutment  
from implant



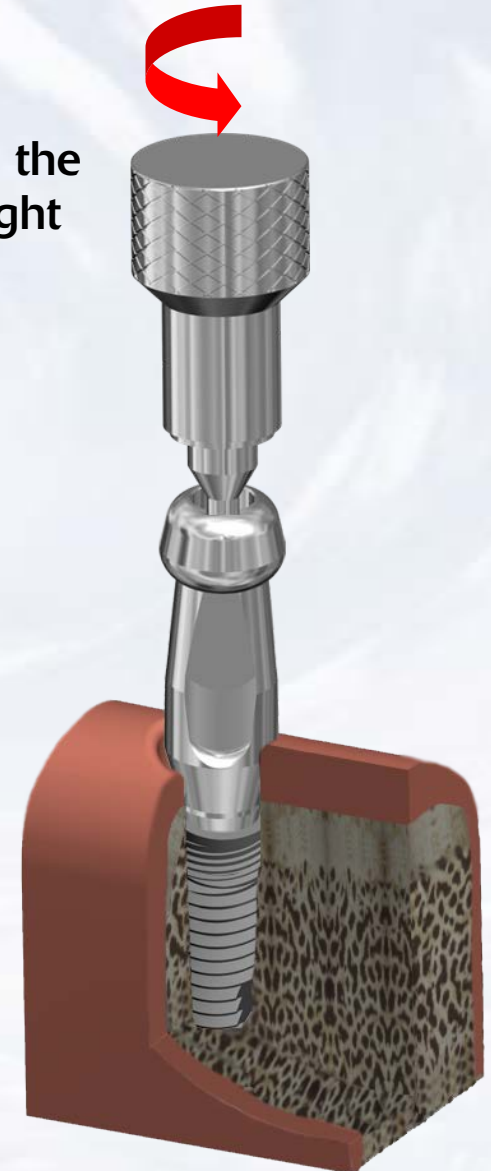
Blue Sky Bio

# BIO|MAX UCLA Screw Retained Crown

Insert the Impression Transfer into the implant ensuring the appropriate orientation

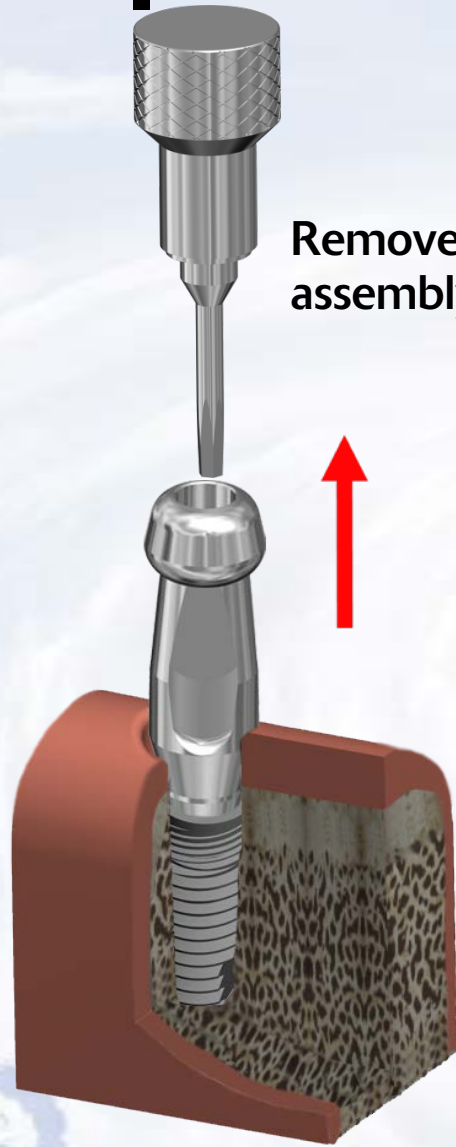


Tighten the screw with the driver assembly with light finger force



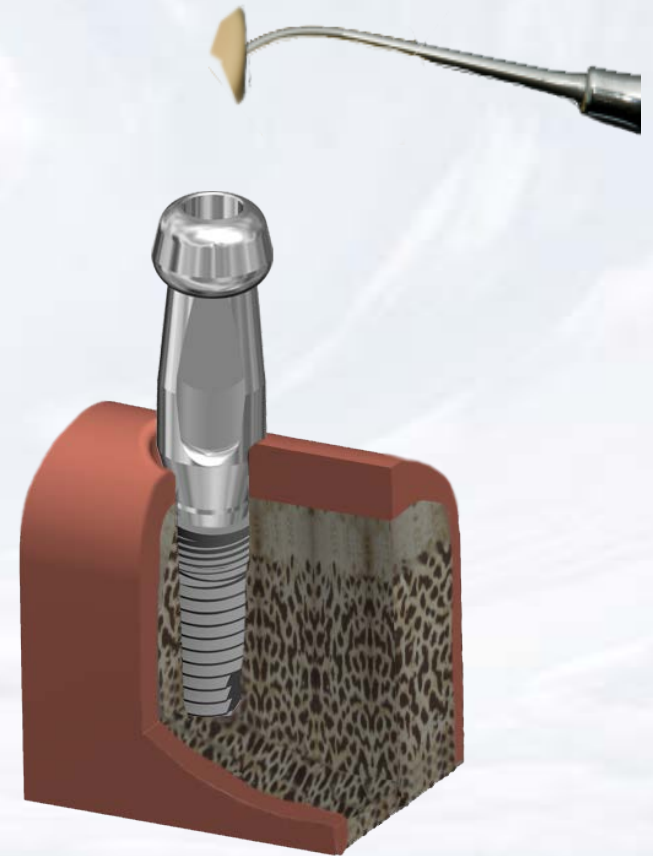
Blue Sky Bio

# BIO|MAX UCLA Screw Retained Crown



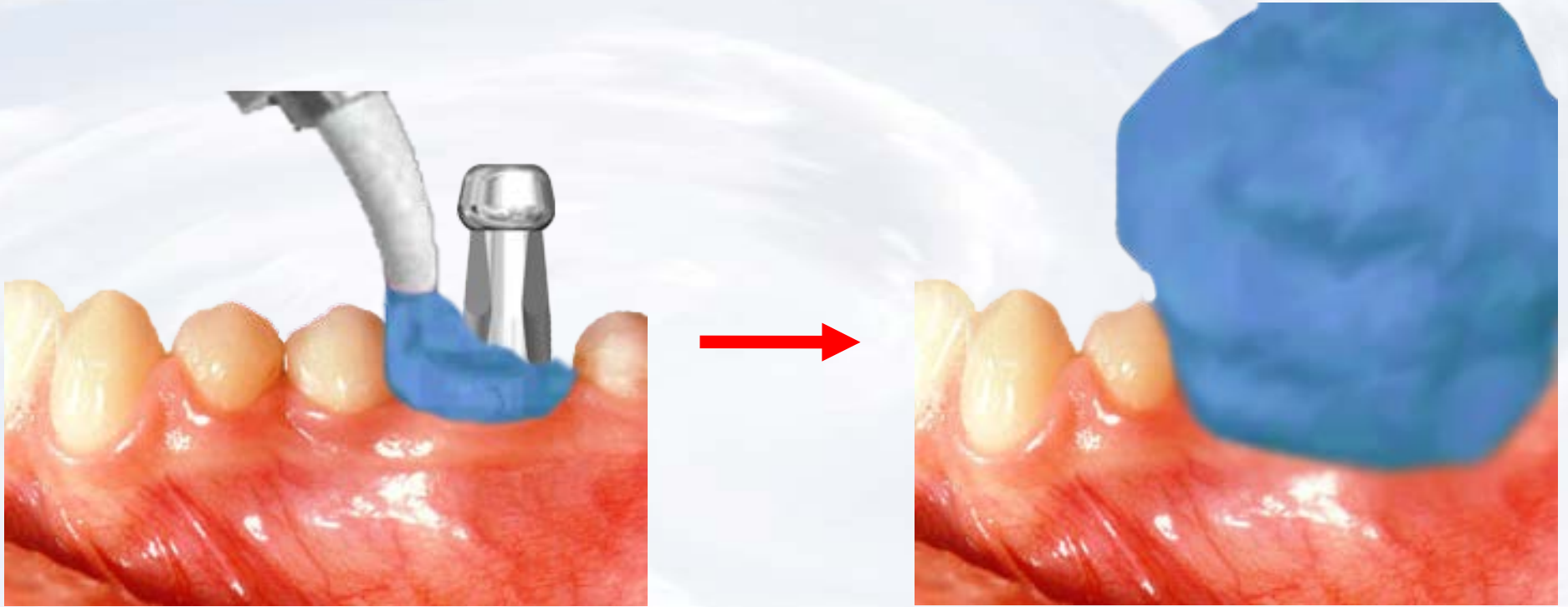
Remove screwdriver  
assembly

Apply wax to the top of the  
Impression.





# BIO|MAX UCLA Screw Retained Crown

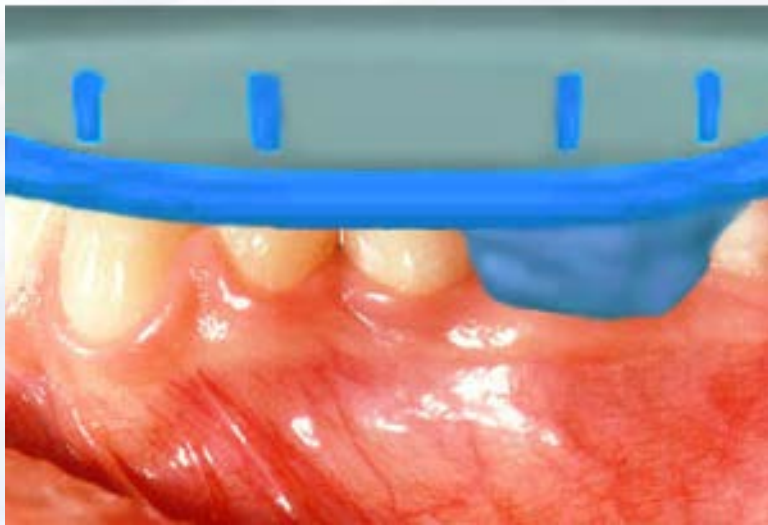


Inject impression material around the impression

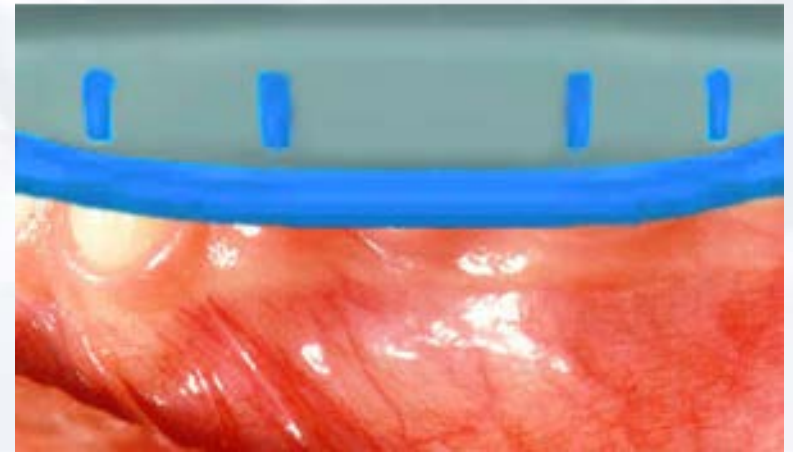


**Blue Sky Bio**

# BIO|MAX UCLA Screw Retained Crown



Insert tray with impression material

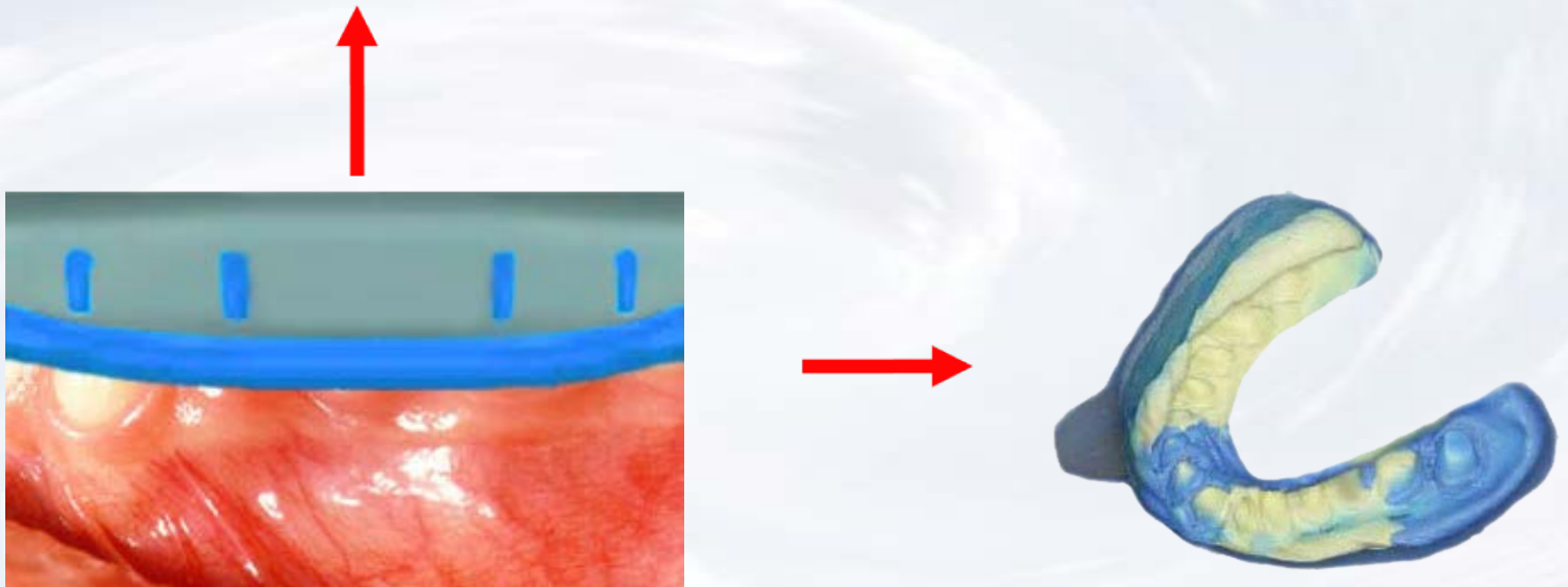


Seat impression to capture dental arch



**Blue Sky Bio**

# BIO|MAX UCLA Screw Retained Crown



Remove the impression from the mouth when material has set

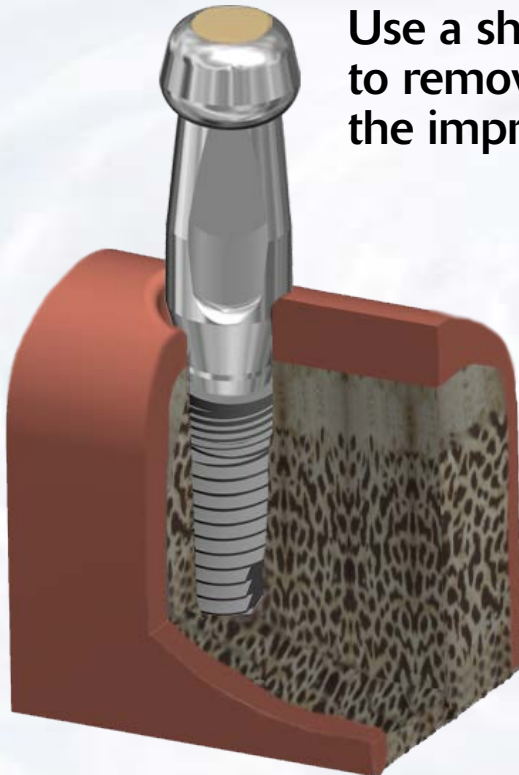


**Blue Sky Bio**

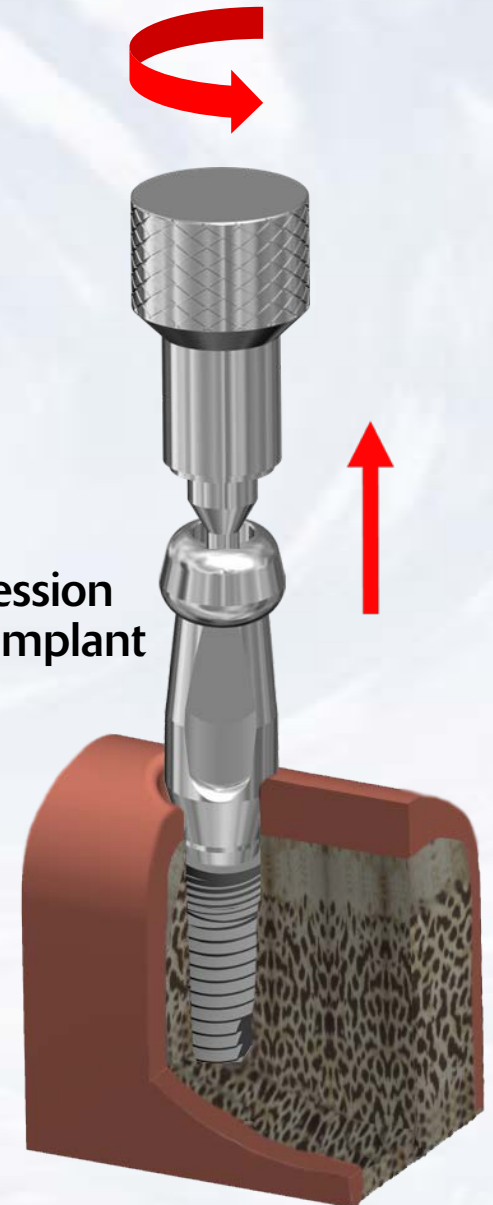
# BIO|MAX UCLA Screw Retained Crown



Use a sharp instrument to remove the wax from the impression transfer



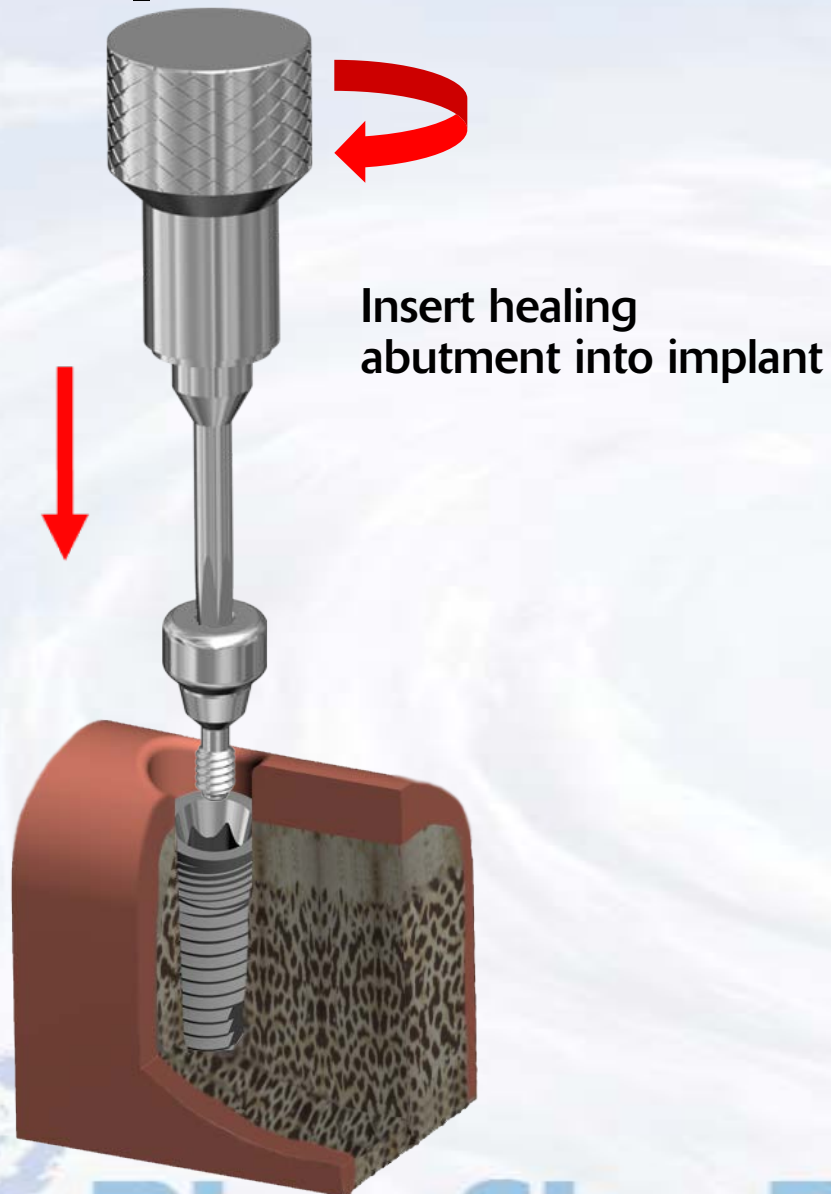
Remove impression transfer from implant



Blue Sky Bio

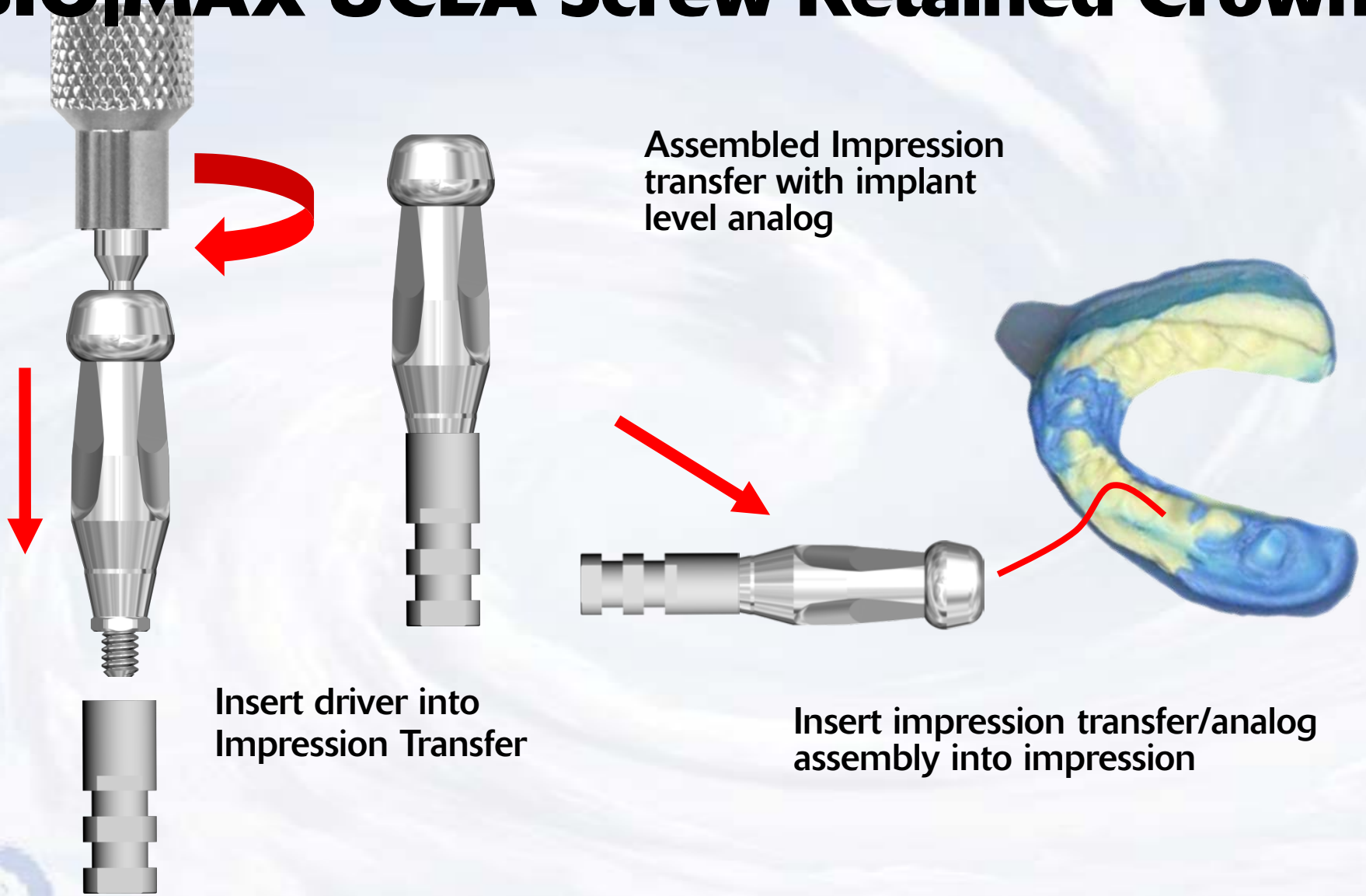


# BIO|MAX UCLA Screw Retained Crown



Healing abutment in place

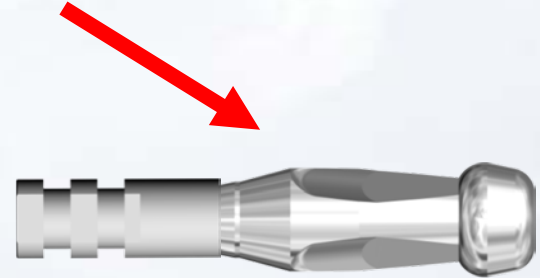
# BIO|MAX UCLA Screw Retained Crown



Assembled Impression transfer with implant level analog



Insert driver into Impression Transfer



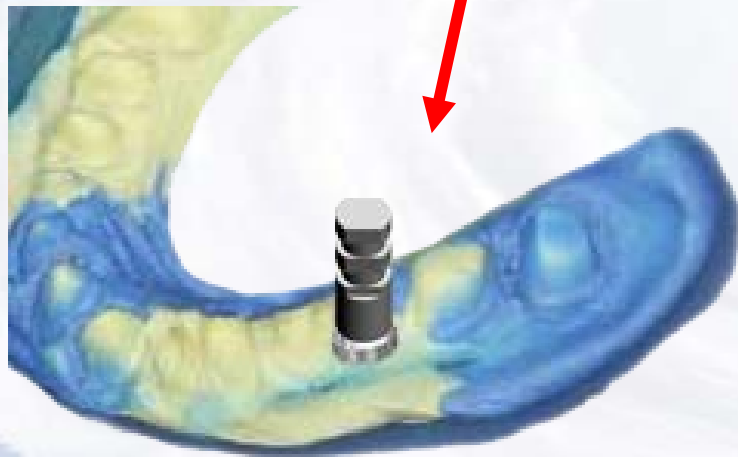
Insert impression transfer/analog assembly into impression



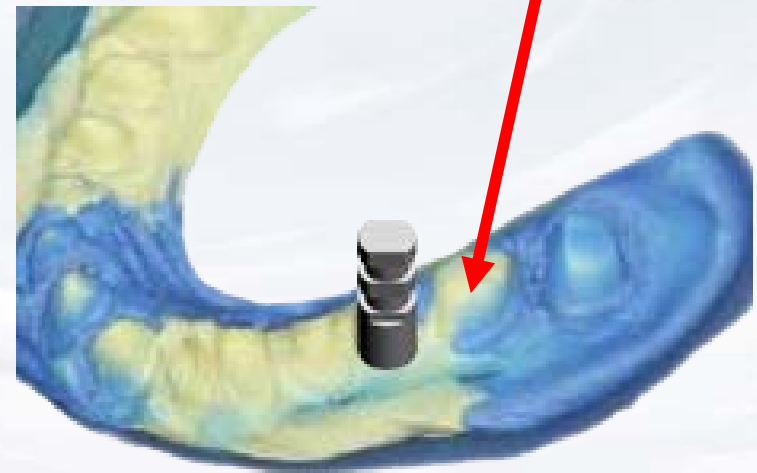
Blue Sky Bio

# BIO|MAX UCLA Screw Retained Crown

Align the flats of UCLA Abutment with the flats within the impression and insert the abutment/analog assembly into the impression



UCLA Abutment/analog assembly completely seated inside impression



Blue Sky Bio

# BIO|MAX UCLA Screw Retained Crown

Apply soft tissue replica material around implant level analog



Pour dental stone into impression

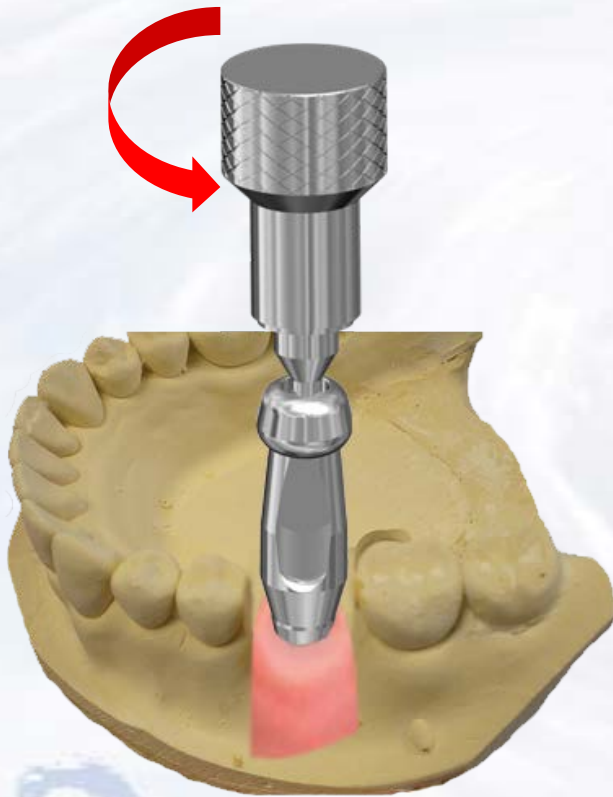


**Blue Sky Bio**



# BIO|MAX UCLA Screw Retained Crown

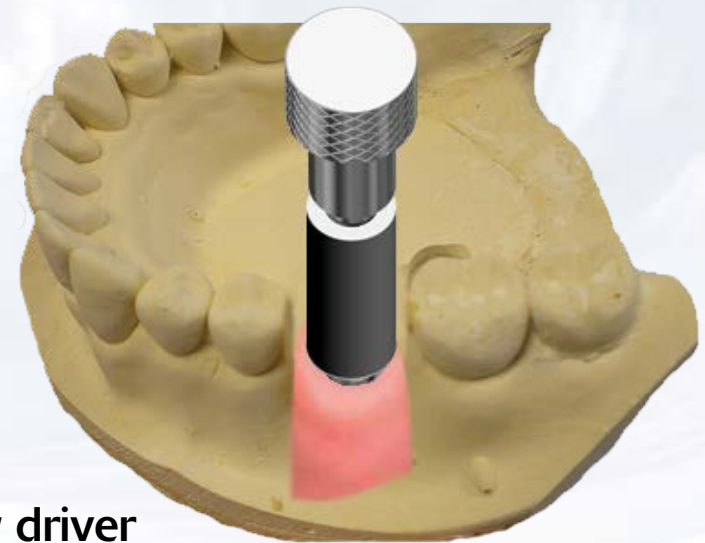
Remove model from impression and loosen the fixation screw of the impression transfer by turning screw driver counter clockwise



Insert the UCLA abutment into the implant level analog ensuring the appropriate orientation. Hand tighten the fixation screw within the UCLA abutment



Insert screw driver assembly into fixation screw in the UCLA abutment



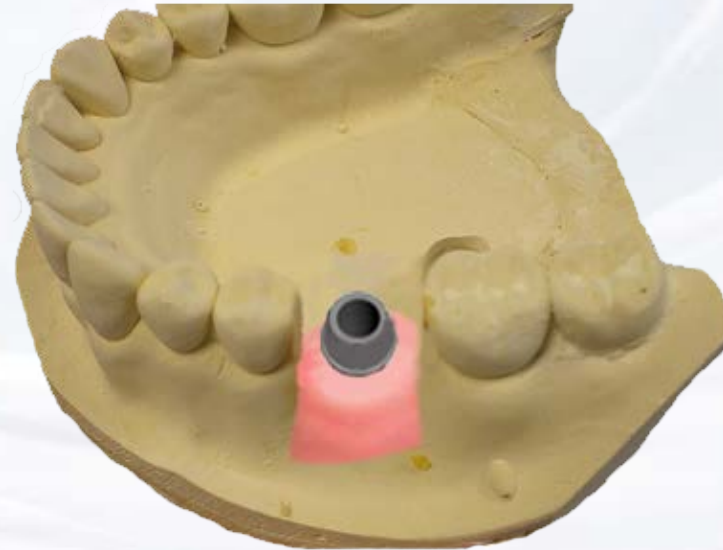
Blue Sky Bio

# BIO|MAX UCLA Screw Retained Crown

Create a wax up of the desired shape of the abutment by subtracting or adding to the resin of the UCLA abutment



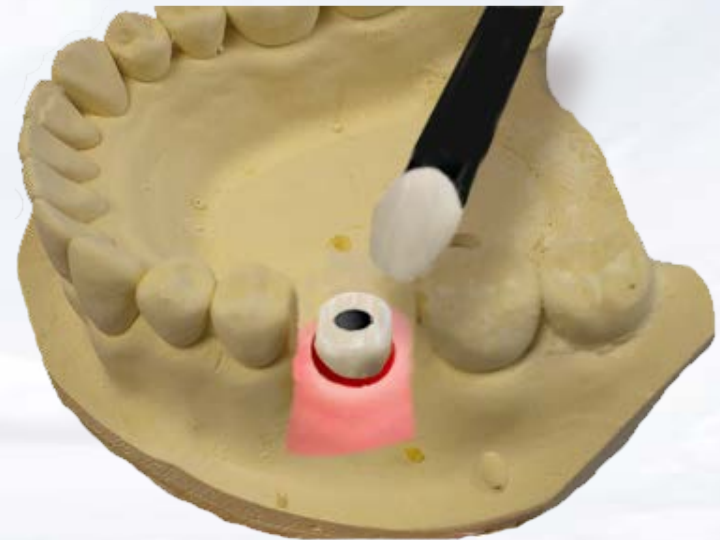
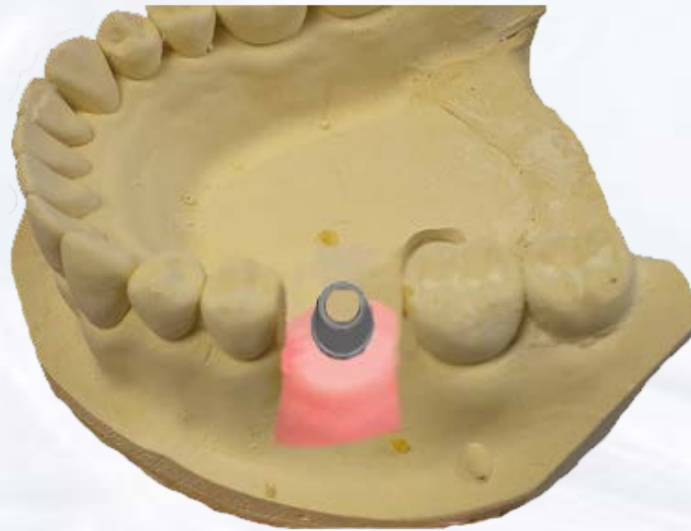
Cast and finish custom UCLA abutment



**Blue Sky Bio**

# BIO|MAX UCLA Screw Retained Crown

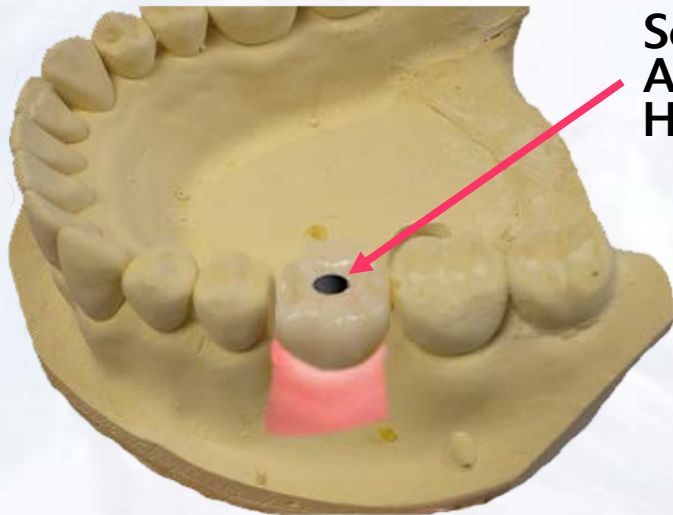
Seal the screw opening of the  
UCLA Abutment



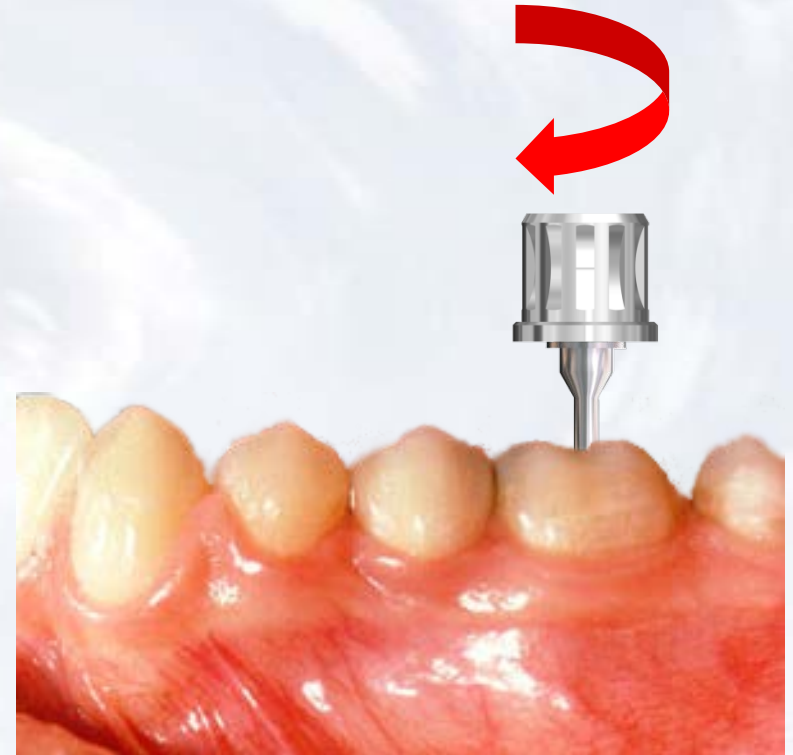
**Blue Sky Bio**

# BIO|MAX UCLA Screw Retained Crown

Stack and fire the Ceramic in the usual manner



Screw Access Hole



Use the screw driver assembly to insert the crown



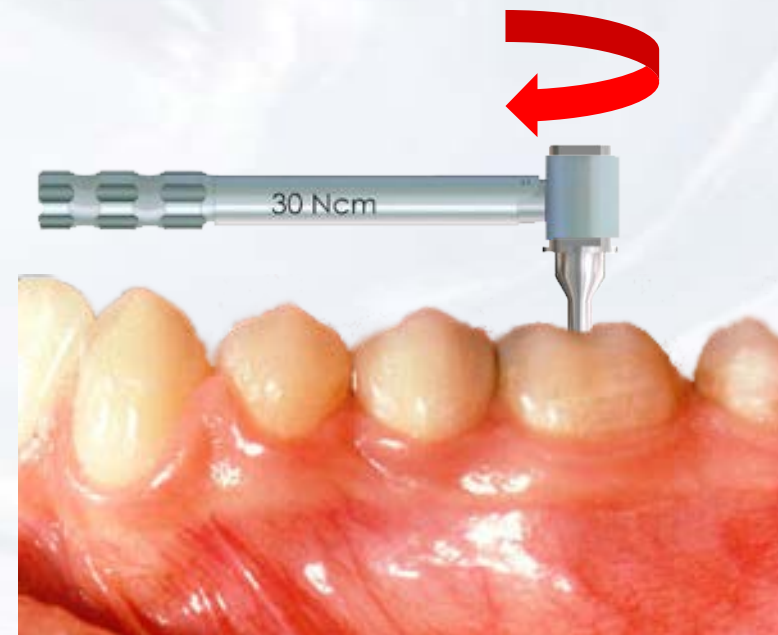
Blue Sky Bio



# BIO|MAX UCLA Screw Retained Crown

Insert the hex driver into the 30Ncm torque ratchet

Insert driver into the abutment screw and turn torque ratchet clockwise until torque of 30 Ncm is reached and the head of the ratchet releases



Blue Sky Bio